



## AMN HEALTHCARE SUPPORTS SCHOOL SYSTEM'S STAFFING NEEDS DURING THE PANDEMIC

With the various measures needed to ensure health and safety on school campuses due to COVID-19, Plainview Independent School District (PISD) knew there would be new protocols needed for students to return to the classroom safely. The goal of having all staff and students return to each of their physical campuses for the 2020-2021 school year would be met with uncertainty and adjustment. That's when the school system administration turned to AMN Healthcare to support them in the venture to staff additional Licensed Vocational Nurses across their four campuses.

With a fixed budget, as many school districts have, AMN Healthcare worked with the PISD team to consult, strategize and staff two additional nurses to meet their 4-week need. AMN Healthcare was able to help PISD achieve their goal of obtaining additional support from experienced nurses who fit in seamlessly with the existing staff and assisted in implementing and informing all new safety protocols in place due to COVID-19.

### The Client's Challenge

With four campuses and only two full-time nurses, the district realized they were understaffed and in need. It wasn't realistic for the school's full-time LVNs to cover multiple campuses and support the needs of the other staff and students returning to school during a pandemic.

***"We were very pleased with the service that AMN provided for us. They were diligent and persistent in finding the personnel that we needed and the people that they sent were top-notch,"*** said Greg Brown, assistant superintendent of cocurricular and academic activities at PISD.

To request more information about how AMN Healthcare's Return to School solutions might benefit your school or university, visit [AMNHealthcare.com/ReturntoWork](https://AMNHealthcare.com/ReturntoWork)

## The Partnership

AMN's team of experts were able to work side-by-side with the superintendent to ensure that the staffing support the district needed would be met. Placing trained and qualified healthcare professionals on their campuses allowed their full-time staff to continue their daily job responsibilities without interruption.

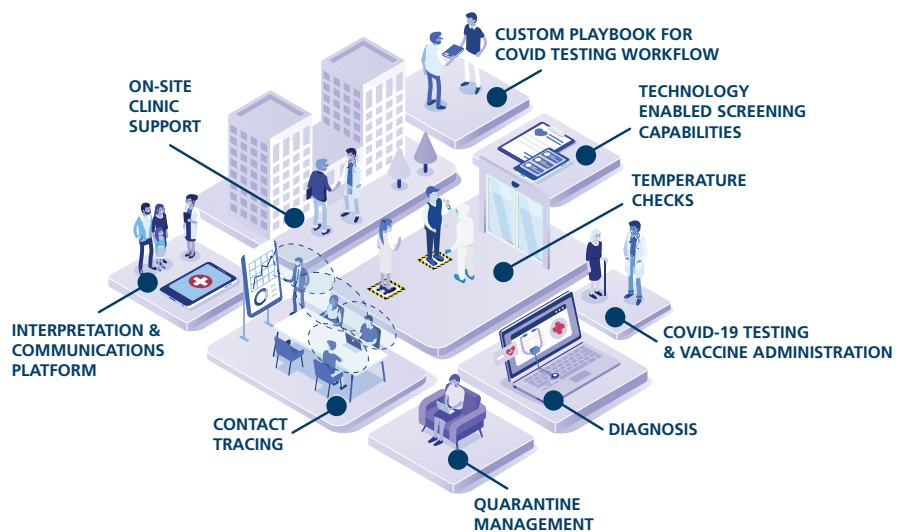
The AMN clinicians were on-site daily to answer questions, provide reminders to students and parents of the district's COVID-19 safety protocols, and demonstrate to parents that the district was looking out for their children's safety.

***"Having them on our side helped us through a sensitive time, and I'm glad to have them as our partners in the future,"*** said Brown.

## The Solution

Many schools have worked hard to find innovative ways to provide a safe learning environment for their students this school year. Regardless of whether your school has chosen virtual learning, in-person learning, or a combination of both – AMN Healthcare can be your all-in-one resource for scalable, flexible solutions.

Whether you are still in need of a playbook that maps out a new process to keep your on-campus students safe, or need help conducting regular temperature checks for your students, AMN Healthcare can provide a custom solution to fit your needs.



## About PISD

The mission of the Plainview Independent School District, in partnership with the community, is to graduate all students with skills and values to compete successfully as life-long learners in society by addressing the needs and recognizing the worth of each student through a coordinated program of instruction in a safe, disciplined environment.

PISD utilizes a collaborative planning process including parents, business, community members, and staff input to develop the district's education plan.

PISD school nurses play a crucial role in students' health care needs. As part of a health care team, school nurses often take the lead in prevention, early detection, and correction of health problems. School nurses also monitor required immunizations and mandated health screenings, and maintain communication with parents as needed. Each school nurse is also an educator, encouraging students to live a healthy lifestyle.

To request more information about how AMN Healthcare's Return to School solutions might benefit your school or university, visit [AMNHealthcare.com/ReturntoWork](https://AMNHealthcare.com/ReturntoWork)